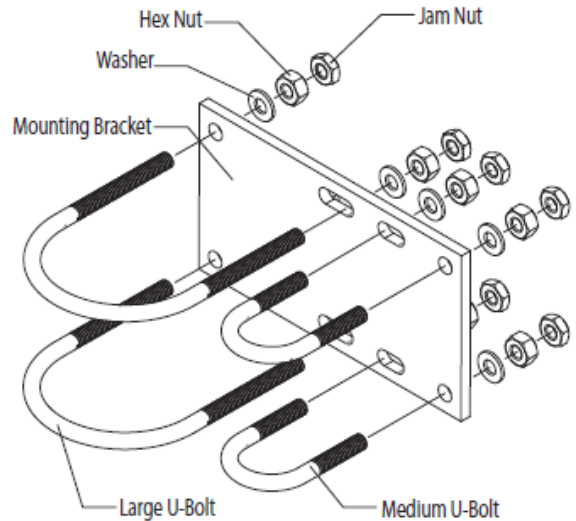


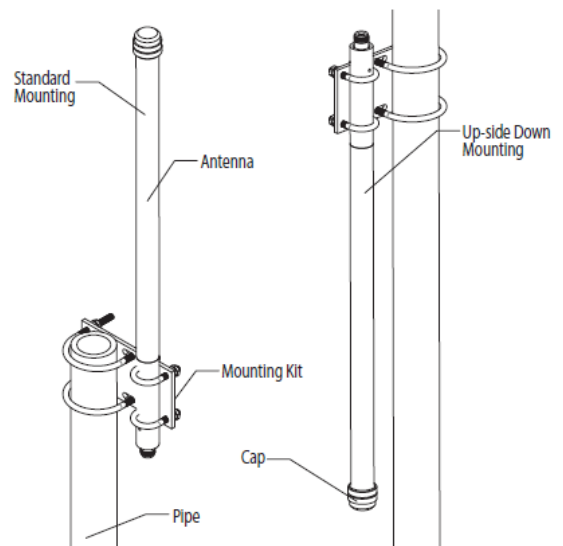
Omni-Directional Series Installation Instructions

INSTALLATION STEPS

- Mounting kit can accommodate pipes 1"-2.5" (25.4mm-63.5mm) in diameter.
- Mount the antenna to the plate first using the supplied hardware.
- When mounting antenna upside-down a drain hole will need to be drilled into the cap.
- **DO NOT** Mount models OD7-1350, OD8-1675, OD6-2600, OD9-2600 upside down.
- **OPTIONAL:** It is recommended that proper lightning protection be used for all outdoor applications.
- Lightning Arrestor (ACC-TW-LP-005N or Gas Tube Surge Arrestor (ACC-GT-NFF-AL)
- **ATTENTION:** Always wear safety glasses and follow the proper safety practices when installing this antenna.



Shown: Mounting Kit and Hardware



950-017-9-001-0114/DR: SM/APP: XX/REV. Cv [Terms and Conditions](#)



Toll Free: 1-800-648-2800
Phone: 1-847-671-6690
Fax: 1-847-250-5120
Email: info@mobilemark.com



Phone: +44 1543 459555
Fax: +44 1543 459545
Email: inquiries@mobilemarkeurope.co.uk



Mobilemark.com