



Verbatim Gateway

TECH NOTES-310

Integrating RACO® Verbatim® Gateway with the Allen-Bradley® CompactLogix™ Series PLC via Ethernet

This technical note explains how to interface the RACO Verbatim Gateway system with the Allen-Bradley CompactLogix family of PLCs via Ethernet. All CompactLogix processors support Ethernet / IP communications either via an on-board port or optional CompactLogix platform card. This port, along with the 1761-NET-ENI, allows the Verbatim Gateway to perform its alarm notifications and monitoring functions using the existing wiring to the Allen-Bradley CompactLogix PLC as inputs via Ethernet. This technical note is applicable for all Verbatim Gateway models.

RACO-supplied components:

Verbatim Gateway (any model)
515VAB-ENI Cable

Allen-Bradley-supplied components:

Any model of the CompactLogix family of PLCs
1761-CBL-PM02 (RS232 programming cable)
1761-NET-ENI (DF1 to Ethernet protocol converter)
Copy of ENI / ENIW Utility software (available free via www.AB.com)
Either a crossover Ethernet cable or a standard Ethernet cable connected through a Hub / Switch
RSLogix™ 5000 software, version 15.02

Note: All CompactLogix processors support Ethernet / IP communications. This Tech Note assumes the user is familiar with Ethernet networks and establishing Ethernet / IP communications with the CompactLogix PLC.

In order to facilitate Ethernet communications, RACO provides a 515VAB-ENI cable that connects the Verbatim Gateway to the 1761-NET-ENI. This cable has the RJ-45 connector required at the Verbatim Gateway end and the 8-pin mini at the other end that connects to Port 2 (RS232) of the 1761-NET-ENI card.

Once this cable is connected, only Ethernet related hardware is required.



Communication Setup for the 1761-NET-ENI

The 1761-NET-ENI provides Ethernet / IP connectivity to all DF1 full duplex devices.

STEP #1 — Acquire the 1761-NET-ENI card and the ENI / ENIW Utility program (free download from www.ab.com), both are required.

STEP #2 — Connect the 1761-CBL-PM02 serial cable. The serial cable connects your PC to the unit via the RS-232 port as illustrated. (right)

STEP #3 — Ethernet port is easily found just below and left of the RS-232 port.

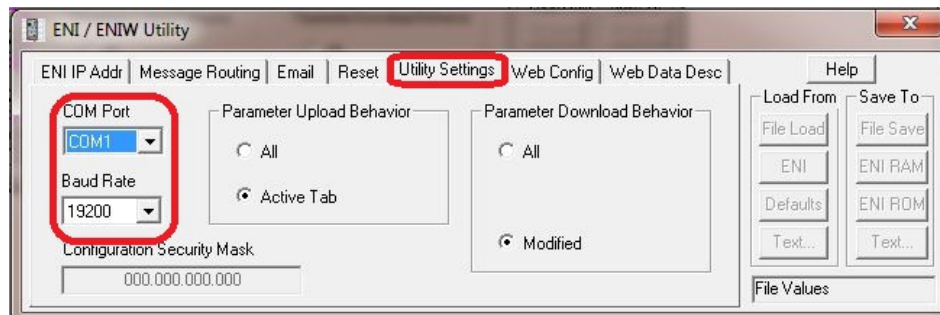
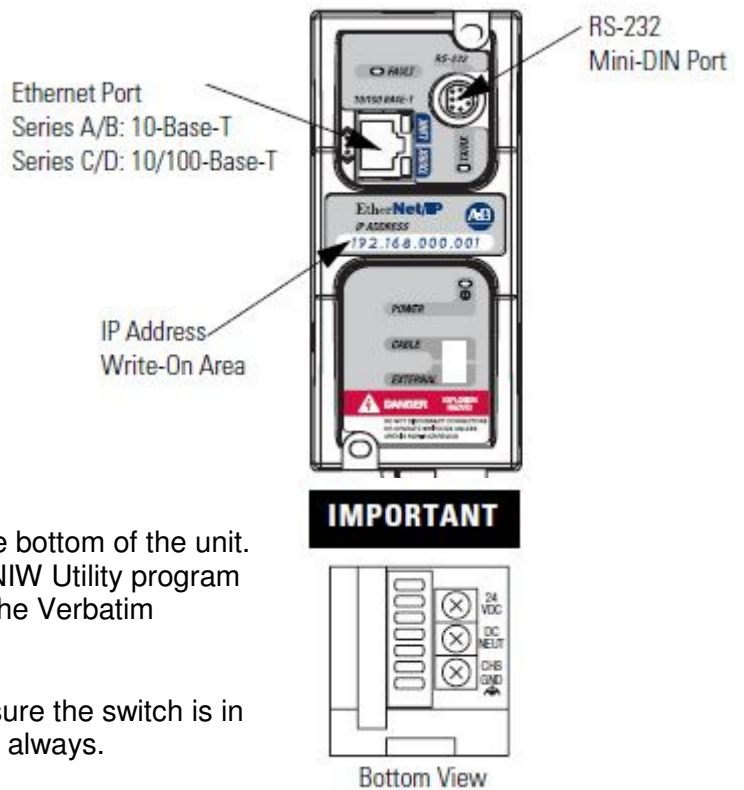
STEP #4 — The center of the unit contains a blank field available to illustrate your custom configurable IP address.

STEP #5 — An external isolated 24vdc power source should be used and wiring terminals can be found at the bottom of the unit. In addition to assigning its own IP address, the ENI / ENIW Utility program maps the DF1 node address of the PLC, as defined in the Verbatim Gateway, to the PLC's IP address.

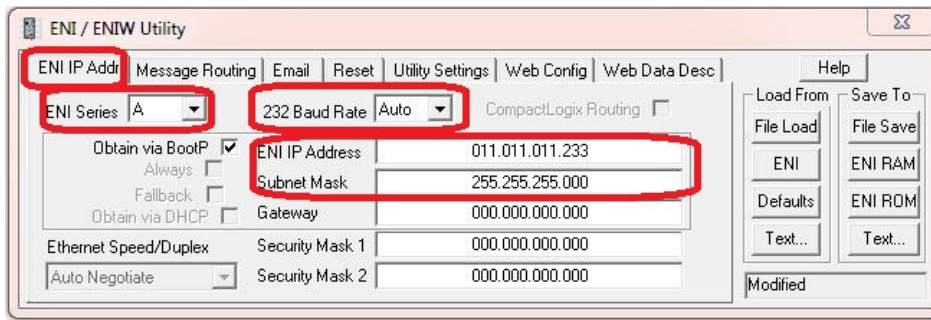
STEP #6 — There is a selector below for power. Make sure the switch is in the "external" position. External power is recommended always.

STEP #7 — Launch ENI / ENIW Utility software. Once the program is launched, you will observe seven available tabs from which to select.

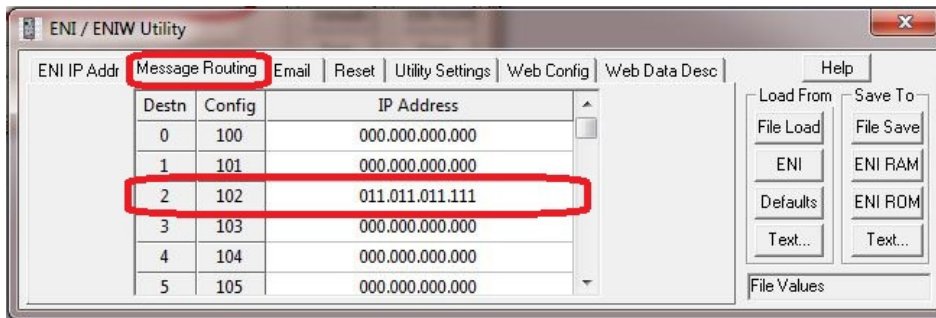
STEP #8 — Choose the "Utility Settings" tab. Select the COM port and baud rate your PC will be using.



STEP #9 — Select the "ENI IP Addr" tab. Next, set the 232 Baud Rate to "Auto." Set the IP address of the 1761-NET-ENI. Ensure the ENI series is correct. Provide the "ENI IP Address", "Subnet Mask" and "Gateway" where necessary.

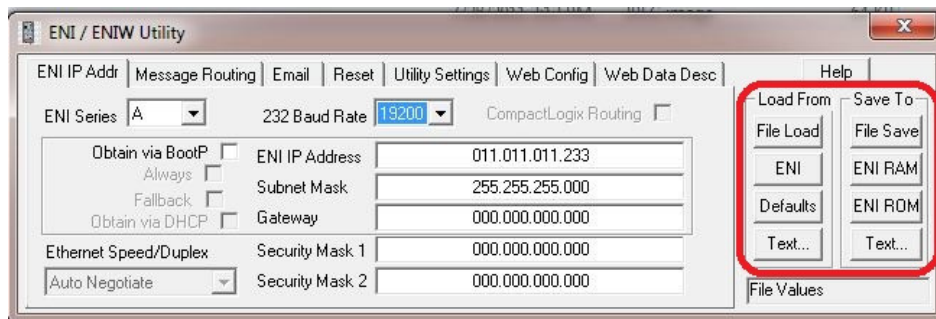


STEP #10 — Our next step prior to downloading / saving is to map the IP address of your SLC 5/05 to an available NODE / STATION address. Under the "Message Routing" tab, assign a DF1 NODE / STATION number (range from 0–49) to the IP address of your SLC 5/05. In this case, we've assigned the node number 2.



Now we are complete with the ENI / ENIW configuration utility and we can save and download our application.

STEP #11 — Observe that there are separate memory areas to save the application, either ENI RAM or ENI ROM. Use the ENI ROM selection.



STEP #12 — Once you've downloaded your application, you may save and close the Utility. The flashing "Fault" LED on the 1761-NET-ENI indicates an incompatible IP or subnet. If the "Fault" LED is off following a download, you are now able to proceed.

STEP #13 — At this point you should also be able to ping the IP Address of your 1761-NET-ENI, and are ready to configure both your CompactLogix registers and Verbatim Gateway.

Configuring the Allen-Bradley CompactLogix Registers

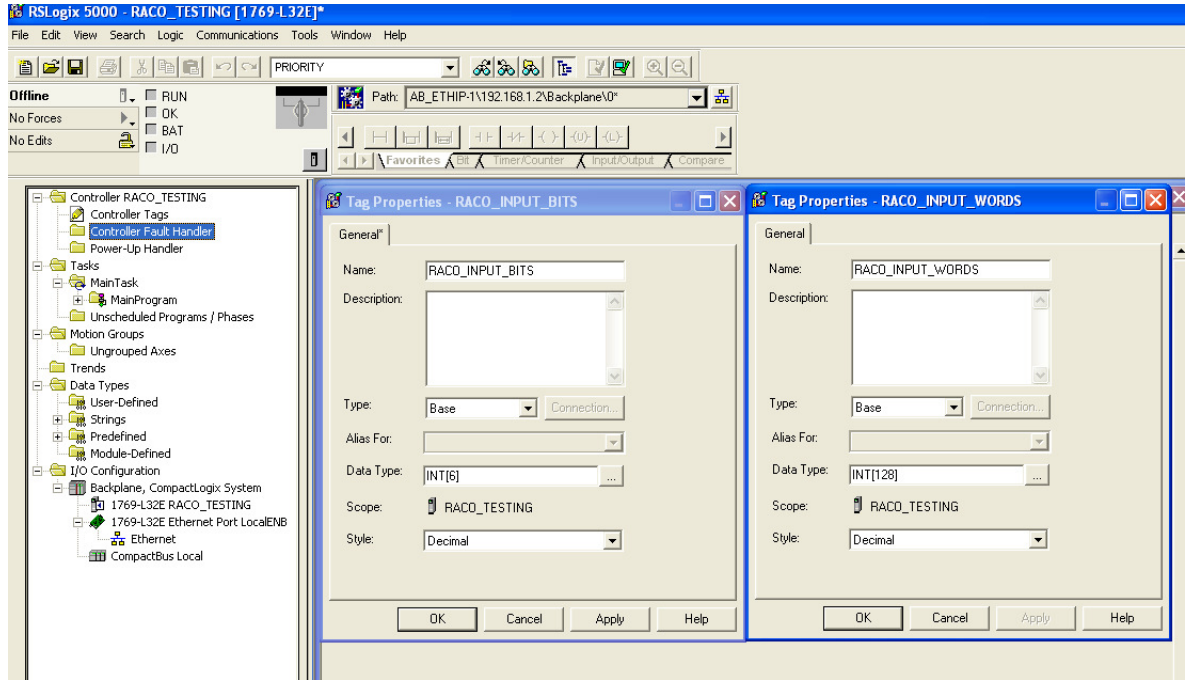
The Verbatim Gateway DF1 driver supports the SLC platform file structure for referencing data.

The CompactLogix uses “Base” tags that are custom-created to address normal internal data. These Base tags would not normally be compatible for communications without “Mapping” or converting to the SLC file structure.

In order to convert to the SLC file structure, it is necessary to first configure CompactLogix Base tags.

STEP #1 — Configure CompactLogix Base Tags

Complete the Tag Properties form, as per your application requirements. In the above example, we’ve created both Boolean and Integer tags. We’ve selected an array of six words for Boolean (i.e. $6 * 16 = 6\text{bits}$) and 96 – 16 bit integer words.



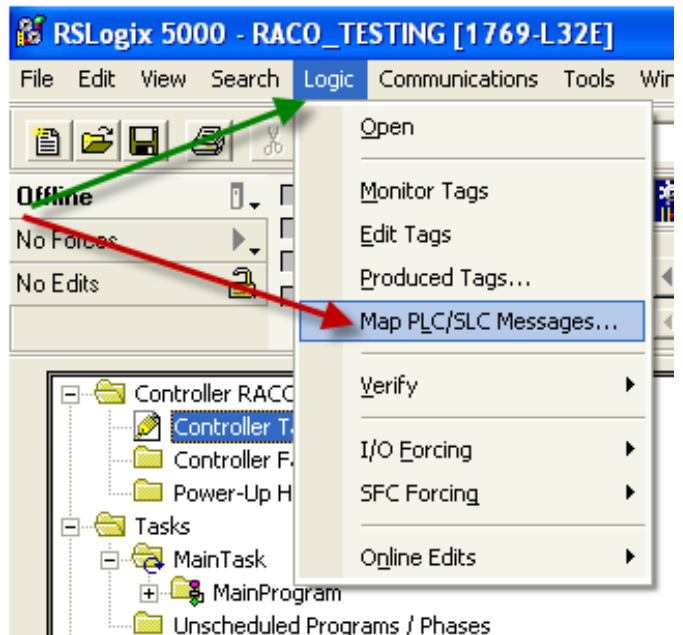
Note: Verbatim Gateway can support up to 96 remote channels.

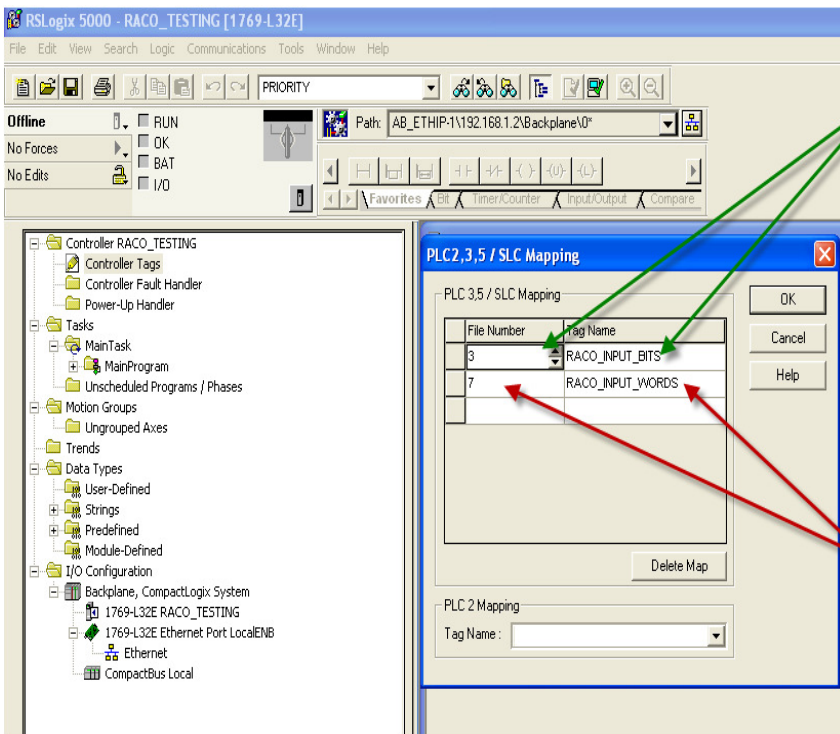
STEP #2 — Mapping CompactLogix Tags to SLC

In order to access the Mapping feature, first select “Logic.”

As indicated by the green arrow, right click “Logic” tab and the form will open, displaying the “Map SLC” feature as per the red arrow.

Once the “Map SLC” feature is clicked (red arrow), the SLC Mapping form will be displayed on screen.





STEP #3 — Completing the SLC Mapping Form

With the SLC Mapping form now open, select the tag name configured for binary, in this example the name RACO_INPUT_BITS will be assigned to file number 3.

Below, add RACO_INPUT_WORDS under Tag Name and associate it with File Number 7.

Click OK and your Tag mapping to the SLC file structure is complete. The PLC is now ready to communicate with the Verbatim Gateway.

Communication Setup for the Verbatim Gateway

The following seven-step procedure will configure your Verbatim Gateway to link its Remote Channels (RC) to your PLC addresses, via DF1. Once linked, the Verbatim Gateway will monitor RC status and Alarms according to your settings.

Connections to the PLC are via the onboard RJ45 port or NET. With the V232 / 485, two NET / ports are provided. NET ID = 1 is dedicated to the DH485 protocol and NET ID = 2 is configurable for either MODBUS RTU Master or DF1 (Refer to Table #1).

TABLE #1

N	Protocol	Reference	Description	Nets
0	NONE		Device disabled	All nets
2	DH485	7.4.2	Allen-Bradley DH485 protocol	Net1 V232 / 485 only
3	DF1	7.4.1	Allen-Bradley serial interface	Net1 (on VCP only) Net 2
4				
5	MODBUSM	7.4.3	Modbus Master	Net1 (on VCP only) Net 2
128	LDL	7.4.5	Local Data Logging May only be used on one device	Net1 (on VCP only) Net 2, 4

STEP #1 — Protocol Driver (4906)

When setting the Protocol, Node Address and Communication parameters, it is good practice to include the NET ID (i.e. 4901, 4903, 4904, 4905 and 4906). Insert the NET ID immediately following the parameter number, as defined below.

As per Table #1 above, set the Protocol Driver to DF1 on NET 2.

Key in the following: 4906 2 <point> 3 <enter>

To read the Protocol Driver for NET 2, key in the following: 4906 2 <enter>

STEP #2 — Node Address (4905)

Choose a unique DF1 NODE address for the Verbatim Gateway. As illustrated above, we've already selected NODE / STATION 2 for the PLC. DF1 allows NODE addresses to range from 1–64, however, the NET-ENI card can only access 0–49. Therefore, a valid range is from 1–49.

For example, set the Gateway NODE address to "1" by using code 4905.

To set the NODE address of NET 2, key in the following: 4905 1<point> <2> <enter>

To read the NODE address of NET 2, key in the following: 4905 1 <enter>

STEP #3 — Communication Parameters (4901, 4903, 4904)

Select the communication parameters. These must match with the driver settings on your PLC.

The following communication settings are required to communicate with the 1761-NET-ENI card.

BAUD rate = 19200 for 19200 on NET 1, key in the following: 4901 2<point>19200 <enter>

Stop bits = 1 for 1 on NET 2, key in the following: 4903 2<point> 1 <enter>

Parity = NONE for "NONE" on NET 2, key in the following: 4904 2<point> 0 <enter>

Parity definition: 0 = NONE, 1 = ODD, 2 = EVEN, 3 = SPACE, 4 = MARK

STEP #4 — Confirmations (4900, 4901, 4930, 4946)

Step #4 will validate all preceding steps, provided both your serial and Ethernet cabling is in place.

To verify successful network communications on NET 2, key in the following: 4930 <point> 2 <enter>

To read the BAUD rate for NET 2, key in the following: 4901 2 <enter>

To verify communication settings reflect the above, at NET 2, key in the following: 4900 2<enter>

To verify active node addresses on NET 2, key in the following: 4946 2<enter>

STEP #5 — Set Defaults

This step simplifies Channel Configuration (i.e. Step 6).

By setting to Default, both the NET ID and NODE / STATION address, it is no longer necessary to reference them when setting Channel Configuration.

Set the following to DEFAULT.

- 1 NET ID, used to communicate via DF1 (i.e. "2")
- 2 NODE / STATION address of the target PLC (i.e. "2" as assigned in the NET-ENI / W utility)

To change the NET ID to 2, key in the following: 4910 2 <enter>

To confirm the NET ID, key in the following: 4910 <enter>

To change the PLC NODE / STATION address to 2 of NET 2, key in the following: 4911 2 <enter>

To confirm PLC NODE / STATION address, key in the following: 4911 <enter>

STEP #6 Channel 1 & 2 Configuration (4501, 4502)

Now that you've mapped the CompactLogix Base tags to the SLC file type, and since Verbatim Gateway channels are completely compatible with the logical and I/O addressing scheme for the file structure of the SLC series processors, the table below should look familiar.

TABLE #2

Identifier	File Type	Example
O	Output	O:1.0/0 (SLC500) O:017/10 (PLC5)
I	Input	I:0.1/0 (SLC500) I:013/07 (PLC5)
S	Status	S:2 (word) S:2/0 (bit)
B	Bit	B:0 (word) B9:0/1 (bit)
T	Timer	T4:0.2 (word) T:0.0/1 (bit)
C	Counter	C5:0.2 (word) C10:0.0/1 (bit)
R	Control	R6:2.1 (word) R:2/15 (bit)
N	Integer	N:1 (word) N:1/0 (bit)
F	Floating Point	F:2 (32-bit word)
NOTE: Cannot specify 16 or 1-bit points with F file type.		
D, G, M1, etc...	All other types	Not Supported

Table #2 shows the Allen-Bradley supported address types available to link to Verbatim Gateway channels.

Indirect, indexed and symbolic addressing schemes are not supported.

The two examples below illustrate the link between the PLC data table (via DF1, Table #2) and the Verbatim Gateway channels.

Example #1

To link B3:0/0 in the PLC to Channel 1 as per the PLC file structure illustrated above, key in the following: 4501
<point> <shift> <3> <shift> <: > <0> <shift> </> <0> <point> <enter>

To verify the current address entered, key in 4501<point><enter>

To read address value, key in 4001<point><enter>, this will read the actual PLC value assigned to Channel 1.

Example #2

To link N7:0 in the SLC PLC to Channel 2 as per our PLC file structure illustrated above, key in the following:
4502 <point> <shift> <N> <7> <shift> <: > <0> <point> <enter>

To verify the current address entered, key in 4502<point><enter>

To read address value, key in 4002<point><enter>. This will read the actual PLC value assigned to Channel 2

STEP #7 — Assignment of Alarm Conditions

Having created and tested your Remote Channels in Step #6, you are now able to assign alarm conditions.

Channel #1, configured as Discrete, is either ON or OFF.

Should this channel be linked to a "Failsafe" point in the PLC (i.e. ON = NORMAL, OFF = ALARM), we would alarm when OFF. In this case, we would key in 45 01 2.

To alarm when ON (i.e. signal is HIGH), key in the following: 45 01 1

To alarm when OFF (i.e. signal is LOW), key in the following: 45 01 2

To read Alarm status for Channel 1, key in 4001<enter>.

Channel #2, configured as Analog, operates within the range from 0–65, 535.

Should this channel be linked to a pressure signal in PLC, and the process requires that pressure remain within an acceptable level, otherwise ALARM (for example, BELOW 10,000 AND ABOVE 30,000), we would key in the following:

To alarm when the analog signal falls below a value, for example 10,000, key in 45 02 5 10000

To read the LOW set point alarm, key in the following: 45 02 5

To alarm when the analog signal rises above a value, for example 30,000, key in 45 02 6 30000

To read the HIGH set point alarm, key in the following: 45 02 6

This document is intended to provide general technical information on a particular subject or subjects and is not an exhaustive treatment of such subjects. Accordingly, the information in this document is not intended to constitute application, design, software or other professional engineering advice or services. Before making any decision or taking any action, which might affect your equipment, you should consult a qualified professional advisor.

RACO Manufacturing and Engineering does not warrant the completeness, timeliness or accuracy of any of the data contained in this document and may make changes thereto at any time in its sole discretion without notice. Further, all information conveyed hereby is provided to users "as is." In no event shall RACO Manufacturing be liable for any damages of any kind including direct, indirect, incidental, consequential, loss profit or damage, even if RACO Manufacturing have been advised on the possibility of such damages.

RACO Manufacturing and Engineering disclaims all warranties whether expressed or implied in respect of the information (including software) provided hereby, including the implied warranties of fitness for a particular purpose, merchantability, and non-infringement. Note that certain jurisdictions do not countenance the exclusion of implied warranties; thus, this disclaimer may not apply to you.

Specifications subject to change without notice. Trade names are trademarks or registered trademarks of their respective companies.



RACO MANUFACTURING AND ENGINEERING CO.

1400 62nd Street • Emeryville, CA 94608

(800) 722-6999 • (510) 658-6713

FAX: (510) 658-3153 • www.racomann.com

Find us under RACOMann at:



www.facebook.com



www.twitter.com



www.linkedin.com



www.youtube.com



<http://autodialer-info.racomann.com>