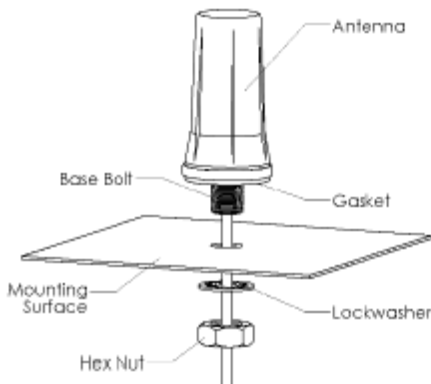


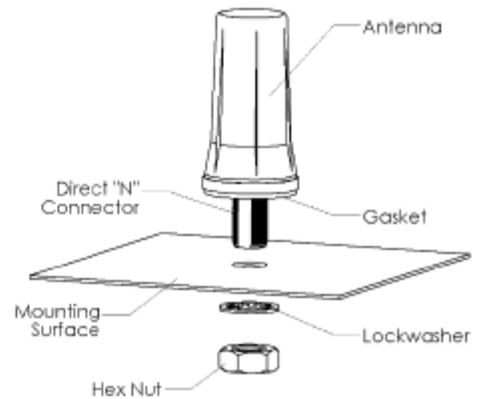
RM, RM3 & RMM Series Installation Instructions

INSTALLATION STEPS:

- Drill a 5/8" (15.9mm) diameter hole through the mounting surface (1 sq-ft ground plane recommended)
- Remove all the paper from the gasket.
- Attach the lock washer and hex nut.
- Tighten nut to 5 lb./ft. (6.8 Nm).
NOTE: DO NOT overtighten



- Feed the cable(s) and base bolt through the hole.
NOTE: Some antennas may have a Direct "N" Connector
- **OPTIONAL:** If additional sealing is required, a bead of silicone can be applied to the gasket



Shown: Direct "N" Connector

NOTE: If the underside of the base bolt is exposed, a sealant is required

ATTENTION: Always wear safety glasses and follow the proper safety practices when installing this antenna.

950-008-9-001-0913

DR: SM

APP: JP

REV. B



[Terms and Conditions](#)



Toll Free: 1-800-648-2800
Phone: 1-847-671-6690
Fax: 1-847-250-5120
Email: info@mobilemark.com



Phone: +44 1543 459555
Fax: +44 1543 459545
Email: inquiries@mobilemarkeurope.co.uk



Mobilemark.com